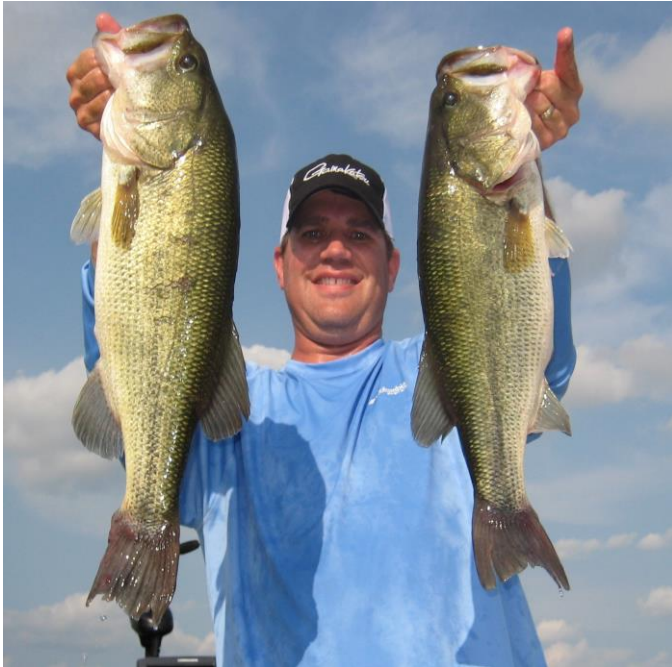


Next Meeting  
September 11, 2014, 7:00 P.M.  
Elk Grove Library, 1001 Wellington Ave.

Club Contact  
Bob Roels 847-818-5296  
r.robert11@comcast.net

# Illinois Spoonplugger

September 2014



**Brett breaks the 6 lb. barrier - Congratulations!**

## August Club Meeting

Attendees – Jerry Hein, Scott Kramer, Craig Hubbard, Jim Taylor, Ed Zaremba, Bob Roels

## Discussions

Jerry Hein explained how he fishes a small hard bottom structure, with a stick or branch on it. The lake with these structures routinely produces big bass. Jerry will spend most of his time casting. He uses nightcrawlers waiting for the bass to move. When the bass move, they are large.

We have **BLUE** folders! I believe Craig and Jim Taylor increased the supply.

## Lake Wisconsin Outing

The outing is scheduled Friday through Sunday, September 12-14<sup>th</sup>. We plan to meet for Dinner or lunch at "Fitz's On the Lake" on Saturday the 13th. They also serve breakfast and lunch. If we have dinner, we will need head count for reservations.

Jim Duplex found a few places to stay. If these places are booked, Jim recommends getting something in Madison about 25 miles from the lake.

### Bridge Motel

W11585 Hwy V  
Lodi, WI 53555  
(608) 592-5599

### Quality Inn & Suites

W9250 Prospect Drive, Lodi,  
WI, US, 53555  
Phone: (608) 592-1450 Fax:  
(608) 592-1449

### Lodi Valley Suites

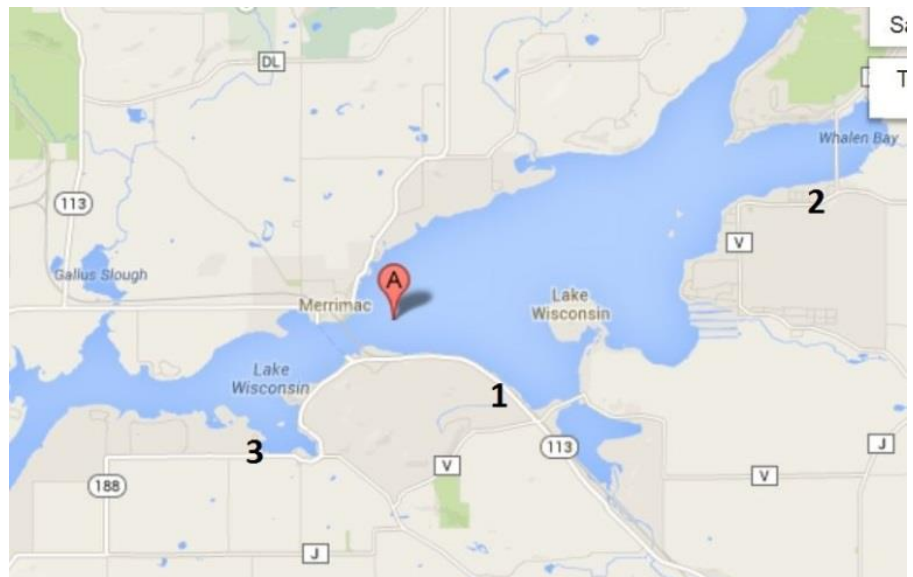
N 1440 Highway 113, Lodi, WI  
53555  
(608) 592-7331

**Boat Launches** – See DNR webpage for a complete list.

<http://dnr.wi.gov/lakes/lakepages/LakeDetail.aspx?wbic=1260600&page=boating>

The three launches with good ramps, parking and docks I have used are -

- 1) Okee Landing on Old Sauk Road, just north of the intersection with County Highway V.
- 2) Whalens Grade – Highway V, just North of the intersection with County Highway CS
- 3) Sunset Bay – On Hwy 188 on the South side of Sunset Bay. The google map shows the old location. You can see the correct location in satellite view.



## Outing Prep

In addition to Terry's maps provided in last month's newsletter. I have included copies of Navionics Maps. The map shows greater detail than the DNR map. The maps are in order from the dam to the headwaters.

## 2014 Club Calendar

September 11 - Club meeting, Elk Grove Library October 9 - Club meeting, Elk Grove Library

September 12-14 - Illinois Spoonplugger Outing at Lake Wisconsin

October 11 - Buck Perry Memorial Outing, Taylorsville, NC, Contacts: Terry O'Malley 828-855-0746 and Jeri Perry 828-632-8058 buckperry90@gmail.com

November 13 - Club meeting, Elk Grove Library

December 11 - Christmas Party, Giordanos, Westchester

## Spoonplugger Resources

Equipment/materials	Supplier	Contact
Quarterly newsletter, videos, spoonplugging guides	National Spoonpluggers of America	<a href="http://nsoa.info/">http://nsoa.info/</a>
Book, home study guide, spoonplugs, No-bo line, and rod	Buck's Baits Inc, <a href="http://www.buckperry.com">www.buckperry.com</a> PO Box 66, Hickory, NC 28603	Scott Jenkins, 828-428-4650 <a href="mailto:scottjenkins@bellsouth.net">scottjenkins@bellsouth.net</a>
Blades, and JB's	Johnny B's, John Bales	<a href="http://johnnyb-lures.com/">http://johnnyb-lures.com/</a>
Plug Knocker	Jerry Borst	<a href="mailto:jborst@joltmail.com">jborst@joltmail.com</a>
Custom Spoonplug rods	Mike Beck	<a href="mailto:Mwbeck54@gmail.com">Mwbeck54@gmail.com</a> , 612-716-2265
Videos	Spoonplugger films	Stephen Gillian
	Structure Fishing	Jim Shell, <a href="http://structurefishing.com/">http://structurefishing.com/</a> <a href="mailto:jshell@structurefishing.com">jshell@structurefishing.com</a>

## Spoonplugging Instructors

John Bales - [johnspoon@embarqmail.com](mailto:johnspoon@embarqmail.com)

Jerry Borst - [jborst@joltmail.com](mailto:jborst@joltmail.com)

Dennis Coulardot - [coular@peoplepc.com](mailto:coular@peoplepc.com)

Chase Klinesteker - [ckspoonpl1@aol.com](mailto:ckspoonpl1@aol.com)

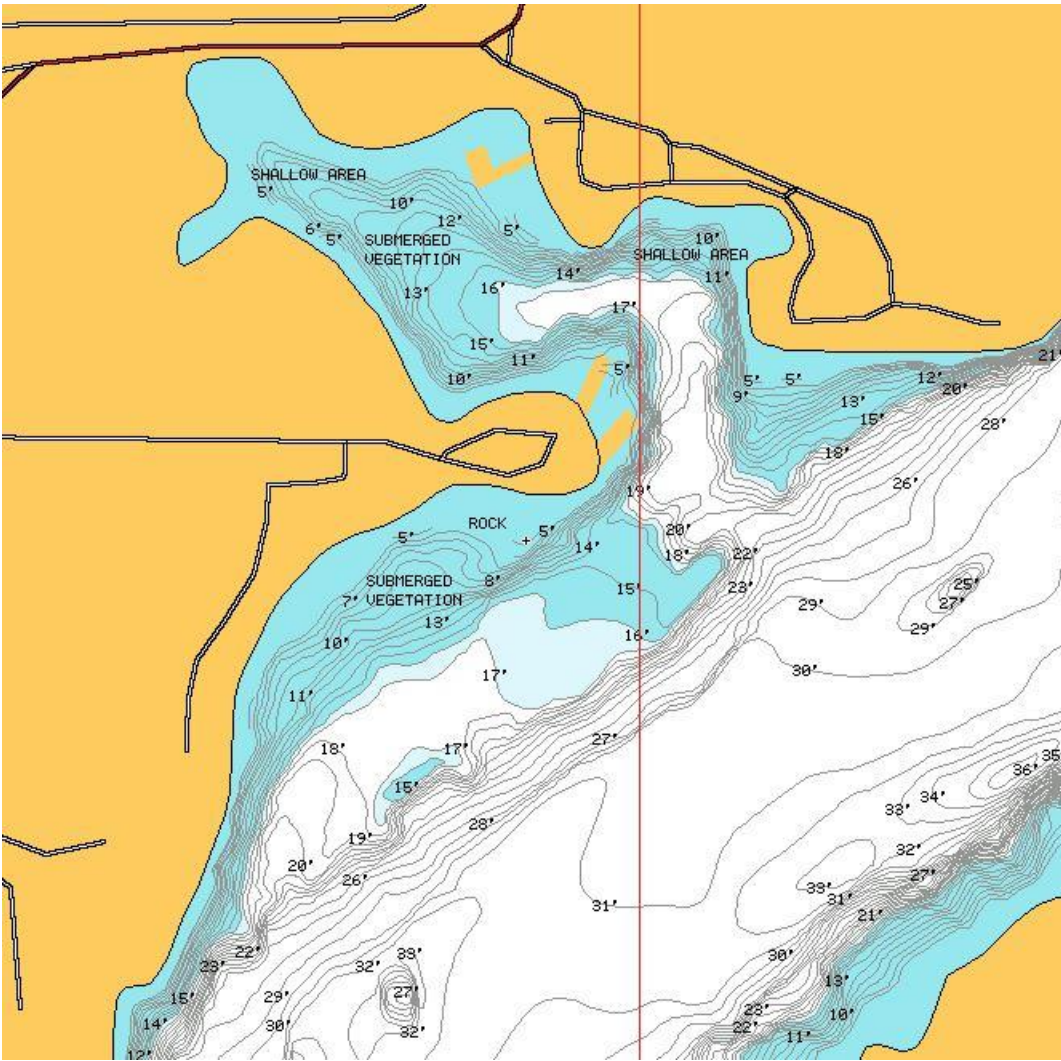
Terry O'Malley - 828-855-0746

Ted Walter - [ahbwalter@gmail.com](mailto:ahbwalter@gmail.com)

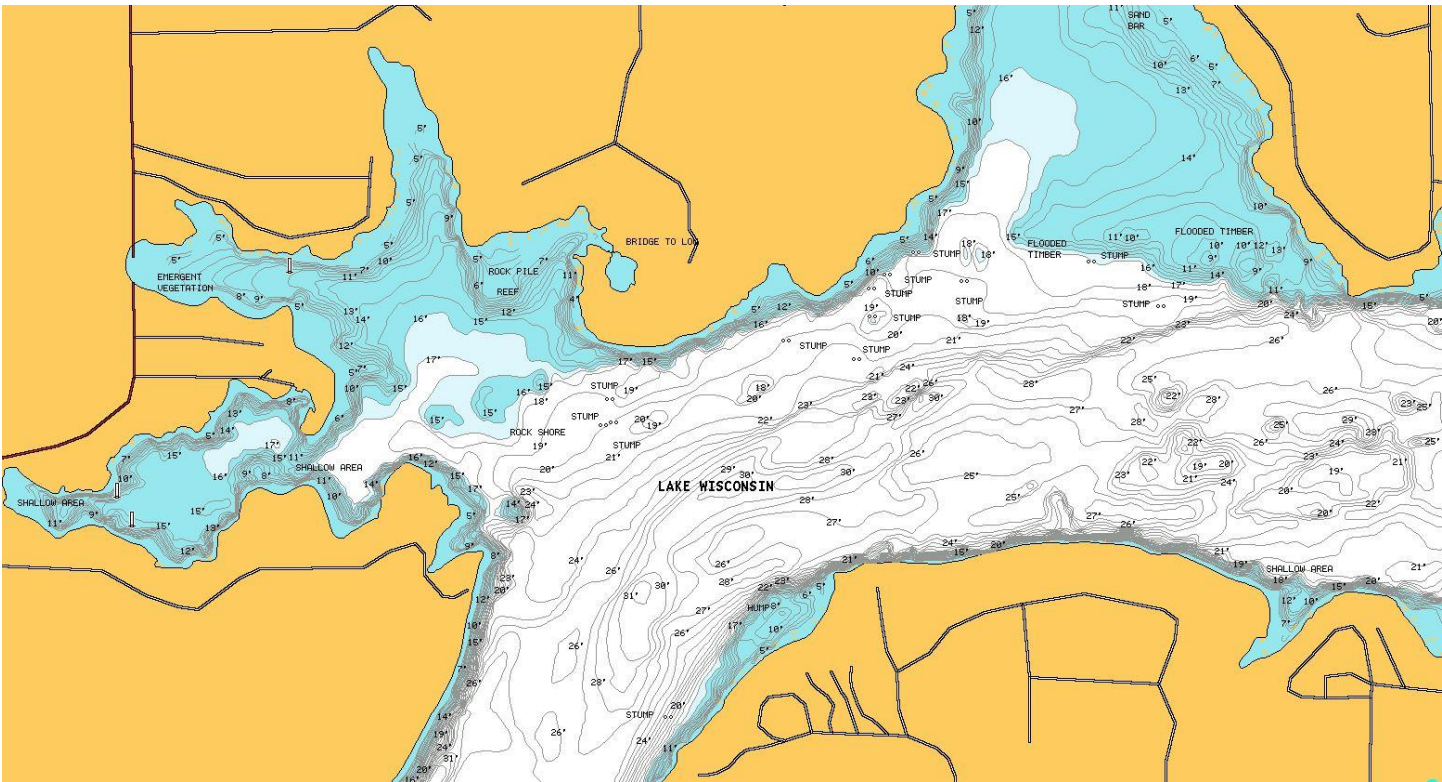
John Zaborny - [jzspoonplug@hotmail.com](mailto:jzspoonplug@hotmail.com)

Barry Zorzanello - [bzorzanello@petraconstruction.com](mailto:bzorzanello@petraconstruction.com)

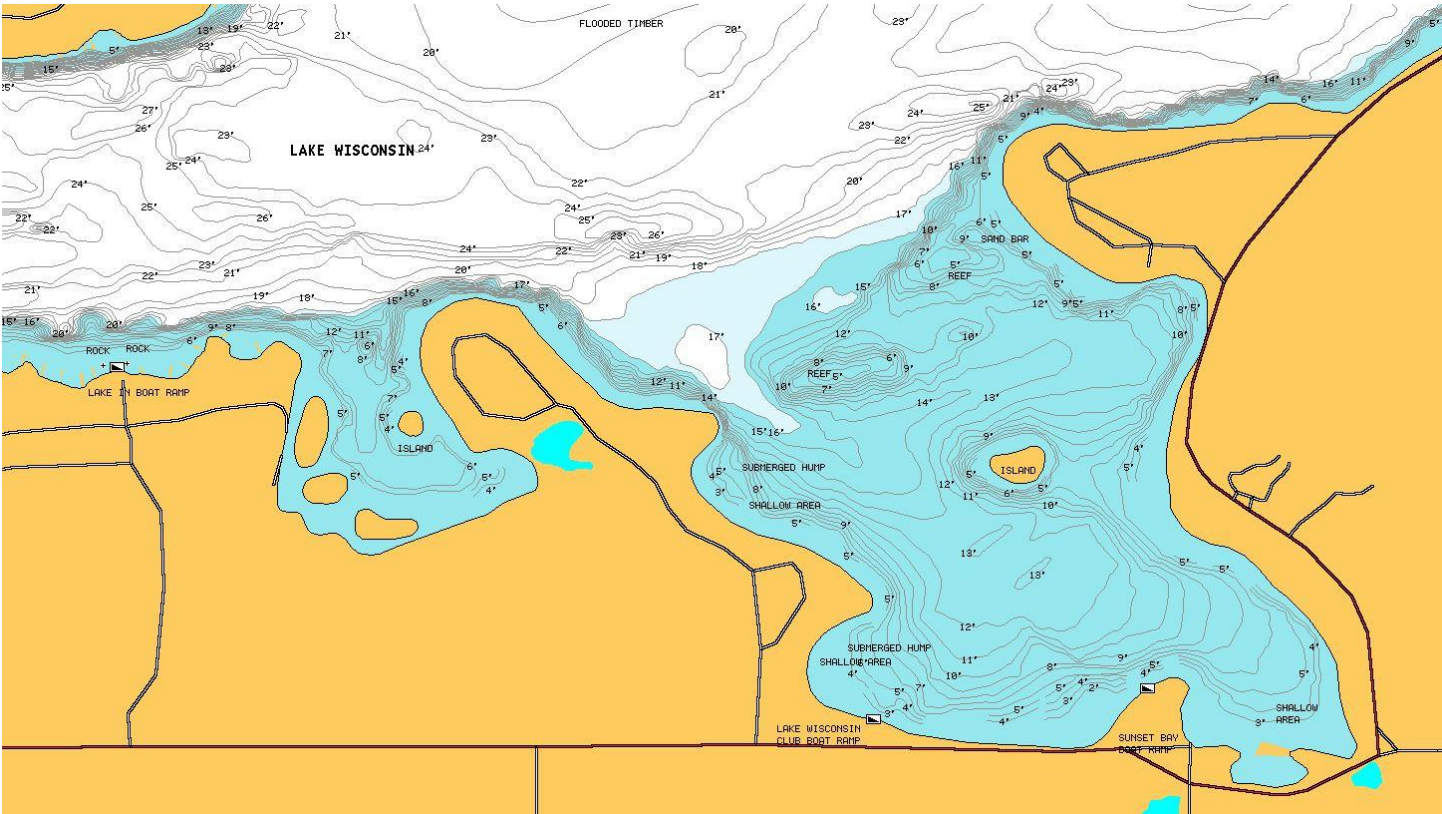
Do you actually read this? Bob Roels [r.robert11@comcast.net](mailto:r.robert11@comcast.net)



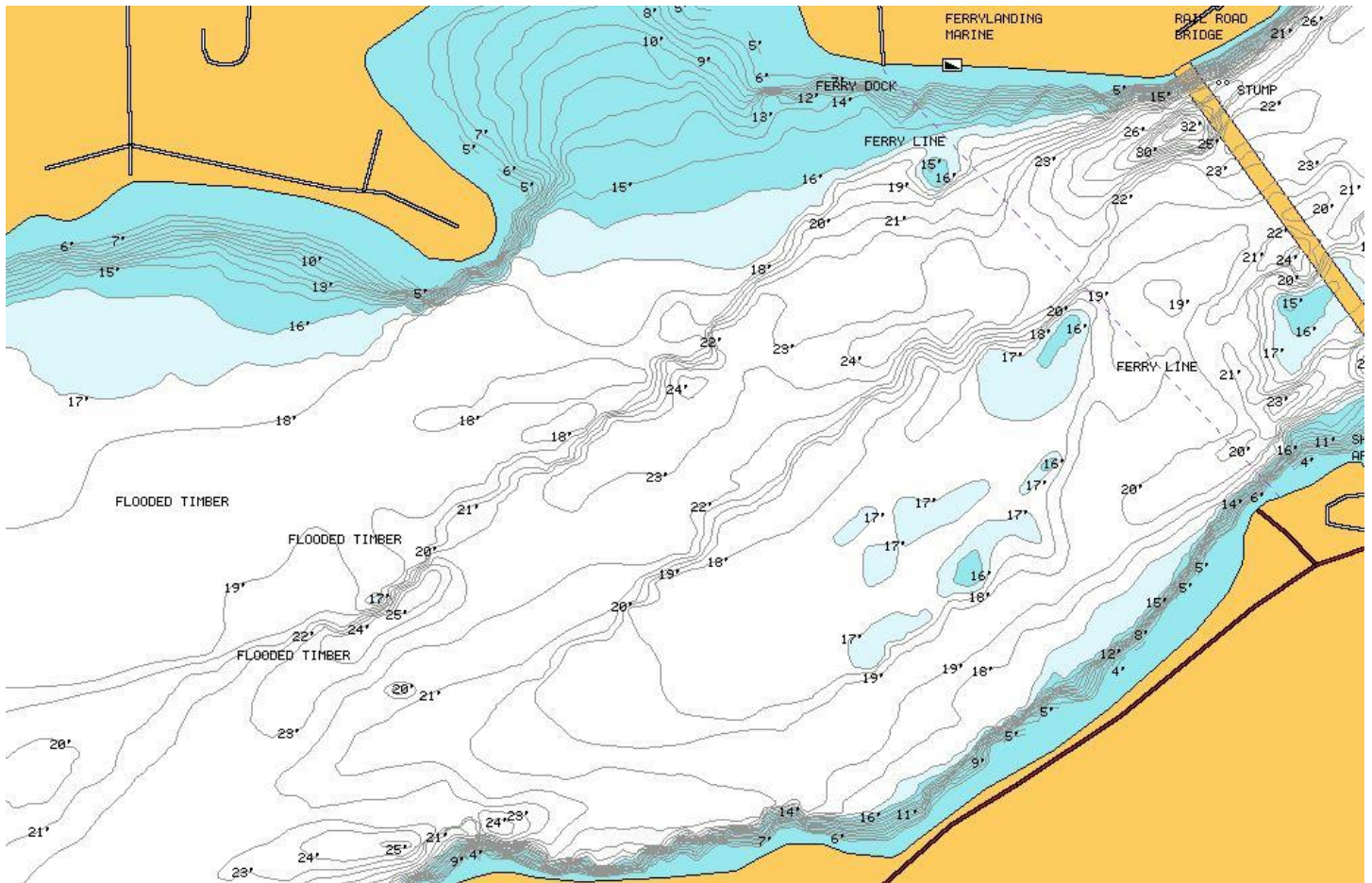
Gruber' Grove (cove by the dam). See Buck tape.



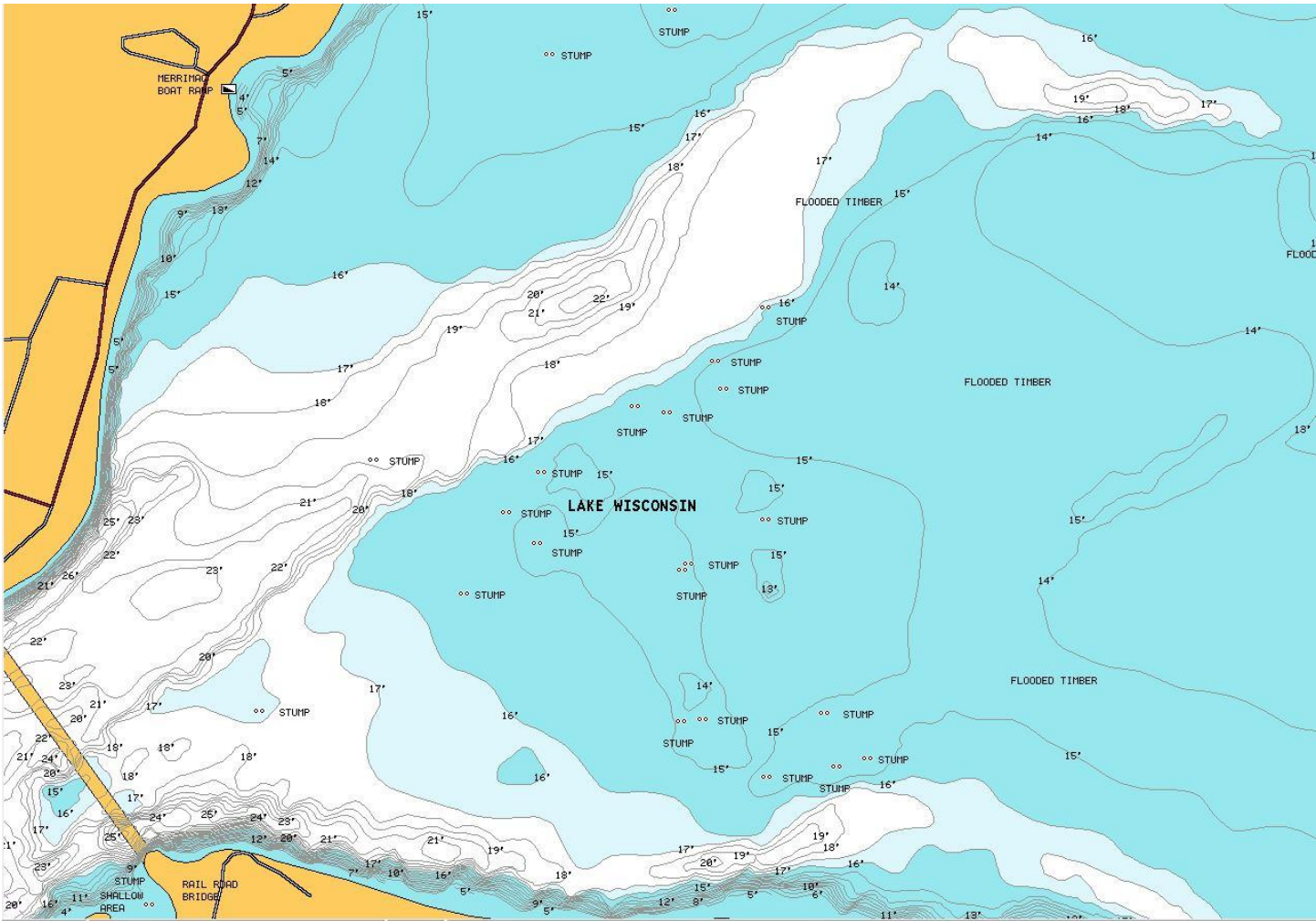
Wiegands bay and Moon Valley. See Terry map of Moon Valley



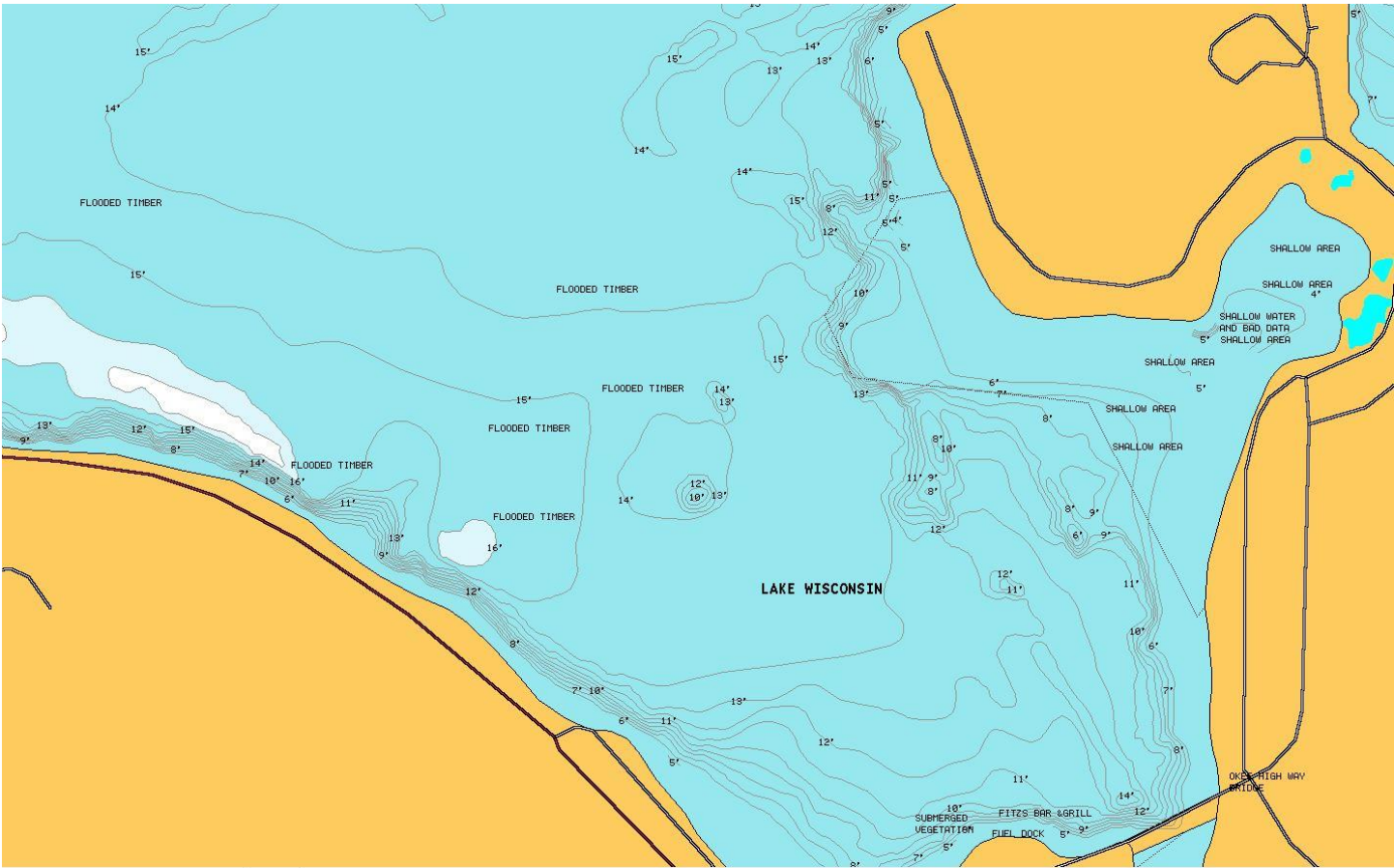
Sunset Bay – See Terry Maps



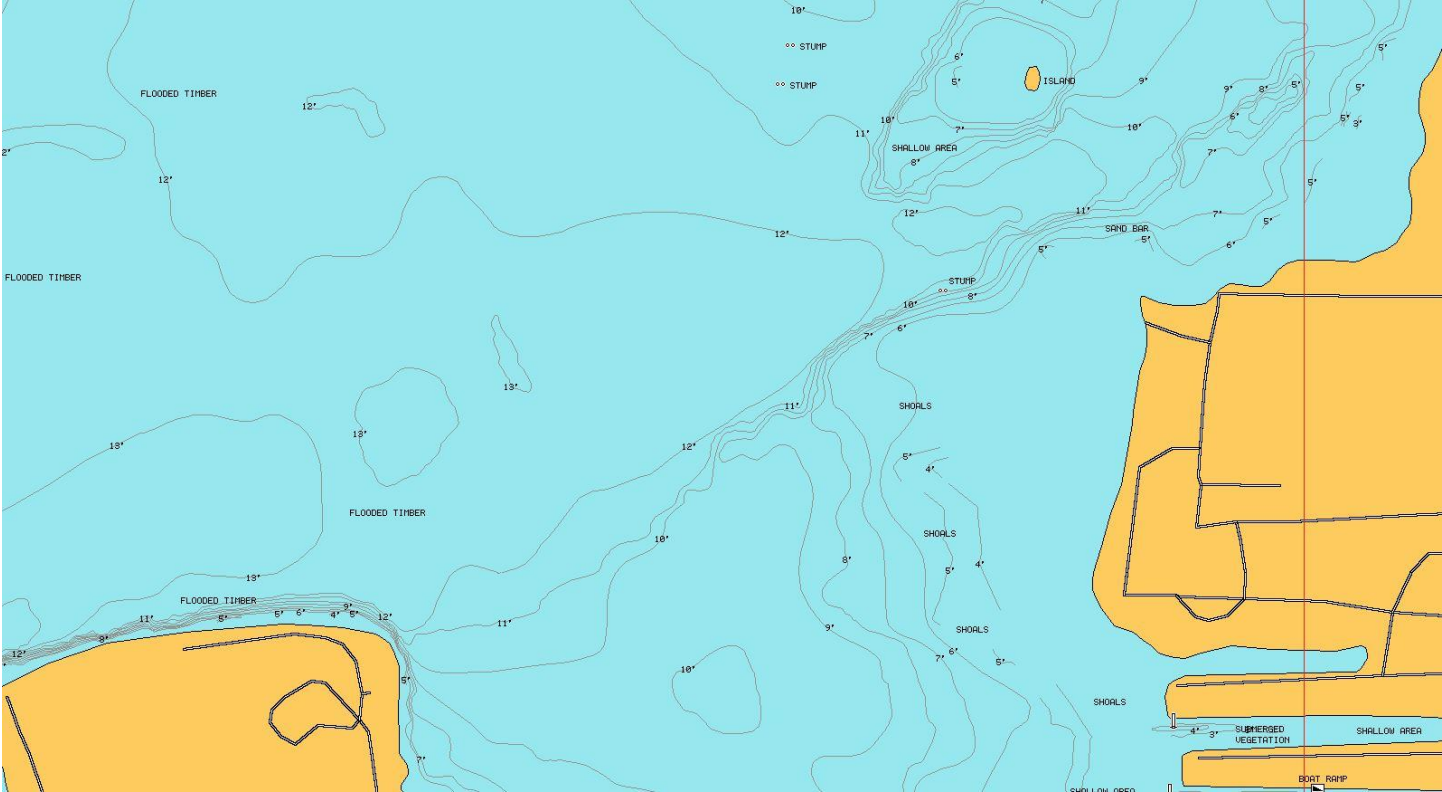
Peanut Bar and Center Delta – See Terry Map



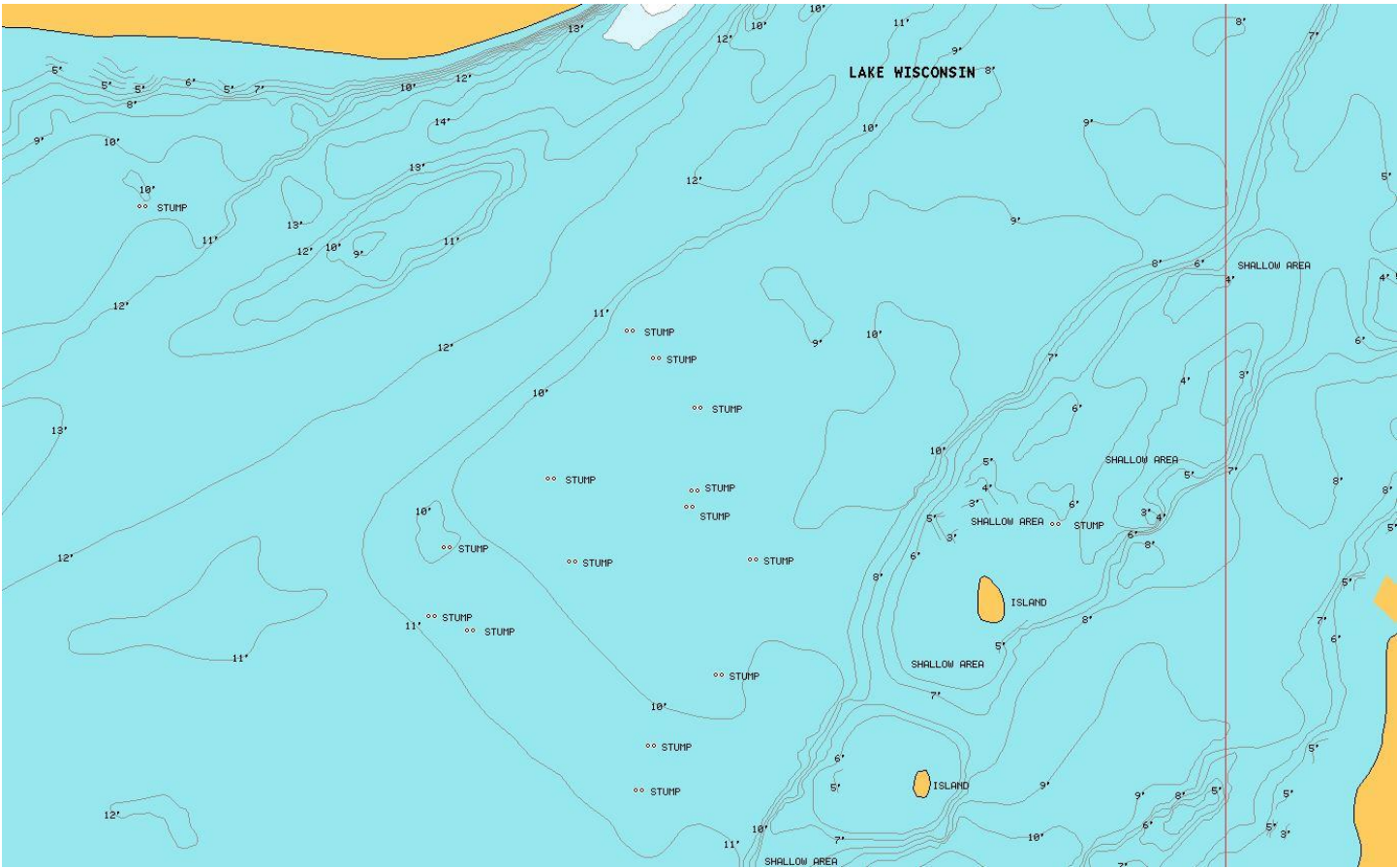
The Stump Field – See Terry Map



Okee Bay – Creek Channels, humps, and bars. All hold fish at times



See Road bed from old map last issue. Road bed crosses bay.



Headwaters flats. River channel and shallow break